

# Fluke 700G Series

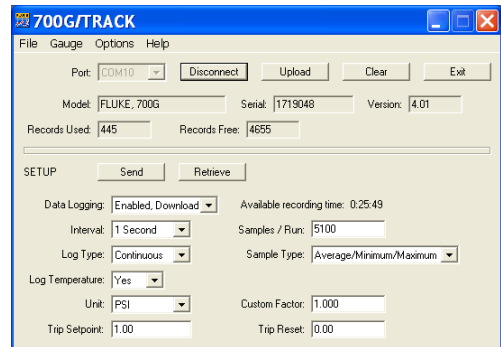
## Precision Pressure Test Gauges



## Technical Data

### Features

- Precision pressure measurement from  $\pm 10$  inH<sub>2</sub>O/20 mbar to 10,000 psi/690 bar
- Absolute pressure measurement ranges 15, 30, 100, 300 psia
- Accuracy to 0.05 % of full scale
- Reference class gauge accuracies to 0.04 % of reading
- Easy to use, rugged construction for reliable performance
- CSA; Class 1, Div 2, Groups A-D rating
- ATEX rating: II 3 G Ex nA IIB T6
- Combine with the 700PTPK or 700HTPK pump kits for a complete pressure testing solution for up to 600 psi (40 bar) with the PTP-1 pneumatic pump and up to 10,000 psi (690 bar) with the HTP-2 hydraulic pump
- Log up to 8,493 pressure measurements to memory (requires 700G/TRACK software)
- Three-year warranty



### Fluke-700PTPK Pneumatic Test Kit

- Combine with any Fluke-700G Series Gauge, 1,000 psi (69 bar) or less, to make a complete pressure testing kit
- Generate pressure up to 600 psi, 40 bar with the 700PTP-1 test pump
- Connect the 700G Series gauge directly to the included PTP-1 hand pump
- Includes hoses and adapters for connecting to the pressure device to be tested
- Hard case protects pump and gauge and allows gauge to remain connected to the pump

### Fluke-700HTPK Hydraulic Test Kit

- Combine with any Fluke-700G Series Gauge, 1,000 psi (69 bar) range or greater, to make a complete pressure testing kit
- Generate pressure up to 10,000 psi, 690 bar with the included 700HTP-2 test pump
- Connect the 700G Series gauge directly to the HTP-2 hand pump
- Includes 700HTH-1 hose kit and adapters for connecting to the pressure device to be tested
- Hard case protects pump and gauge and allows gauge to remain connected to the pump

### 700G/TRACK Logging Software

- Use with 700G Series gauges to perform real time data logging to a PC
- Download logging configurations to the 700G Series gauges for a remote logging event
- Configure logging event reading rate, duration and measurement units
- Upload measurements logged remotely and display or export measurements
- Includes communication cable for connection to a PC

## Specifications

Model	Range	Resolution	Accuracy	Burst pressure
Fluke-700G01	-10 to +10 inH <sub>2</sub> O -20 mbar to 20 mbar	0.001 inH <sub>2</sub> O 0.001 mbar	Positive pressure ± 0.1 % of range, Vacuum ± 0.1 % of range	3 psi 210 mbar
Fluke-700G02	-1 to +1 psi -70 mbar to 70 mbar	0.0001 psi 0.001 mbar		5 psi 350 mbar
Fluke-700G04	-14 psi to 15 psi -.97 bar to 1 bar	0.001 psi 0.0001 bar	Positive pressure ± 0.05 % FS Vacuum ± 0.1 % FS	60 psi 4 bar
Fluke-700G05	-14 psi to 30 psi -.97 bar to 2 bar	0.001 psi 0.0001 bar		120 psi 8 bar
Fluke-700G06	-12 psi to 100 psi -.83 bar to 6.9 bar	0.01 psi 0.0001 bar		400 psi 26 bar
Fluke-700G27	-12 psi to 300 psi -.83 bar to 20 bar	0.01 psi 0.001 bar		1200 psi 80 bar
Fluke-700G07	-12 psi to 500 psi -.83 bar to 34 bar	0.01 psi 0.001 bar		2000 psi 138 bar
Fluke-700G08	-14 psi to 1000 psi -.97 bar to 69 bar	0.1 psi 0.001 bar		4000 psi 266 bar
Fluke-700G10	-14 to 2000 psi -.97 bar to 140 bar	0.1 psi 0.01 bar		8000 psi 550 bar
Fluke-700G29	-14 psi to 3000 psi -.97 bar to 200 bar	0.1 psi 0.01 bar		10000 psi 690 bar
Fluke-700G30	-14 psi to 5000 psi -.97 bar to 340 bar	0.1 psi 0.01 bar		10000 psi 690 bar
Fluke-700G31	-14 psi to 10000 psi -.97 bar to 690 bar	1 psi 0.01 bar		20000 psi 1035 bar
Fluke-700GA4	0 to 15 psia 0 to 1 bar absolute	0.001 psi 0.0001 bar	± 0.05 % of range	60 psi 4 bar
Fluke-700GA5	0 to 30 psia 0 to 2 bar absolute	0.001 psi 0.0001 bar		120 psi 8 bar
Fluke-700GA6	0 to 100 psia 0 to 6.9 bar absolute	0.01 psi 0.0001 bar		400 psi 27 bar
Fluke-700GA27	0 to 300 psia 0 to 20 bar absolute	0.01 psi 0.001 bar		1200 psi 80 bar
Fluke-700RG05	-14 to +30 psi -0.97 to +2 bar	0.001 psi 0.0001 bar	Positive pressure, ± 0.04 % of reading, +.01 % of range, Vacuum ± 0.05 % of range	90 psi 6 bar
Fluke-700RG06	-12 to 100 psi -0.83 to 6.9 bar	0.01 psi 0.0001 bar	Positive pressure, ± 0.04 % of reading +.01 % of range, Vacuum ± 0.1 % of range	400 psi 27 bar
Fluke-700RG07	-12 to 500 psi -0.83 to 34	0.01 psi 0.001 bar		2000 psi 138 bar
Fluke-700RG08	-14 to 1000 psi -0.97 to 69 bar	0.1 psi 0.001 bar		4000 psi 275 bar
Fluke-700RG29	-14 to 3000 psi -0.97 to 200 bar	0.1 psi 0.01 bar		10000 psi 690 bar
Fluke-700RG30	-14 to 5000 psi -0.97 to 340 bar	0.1 psi 0.01 bar		15000 psi 1035 bar
Fluke-700RG31	-14 to 10000 psi -0.97 to 690 bar	1 psi 0.01 bar		20000 psi 1380 bar
700R Ranges: Temperature Compensation 0 °C to 50 °C (32 °F to 122 °F) to rated accuracy. For temperatures from -10 °C to 0 °C and 50 °C to 55 °C, add .005 % FS/°C				
<b>Media compatibility</b>				
<ul style="list-style-type: none"> <li>• 10 inH<sub>2</sub>O, 1, 15, 30 psi: any clean dry non-corrosive gas</li> <li>• 100, 300, 500, 1000 psi: any liquids or gases compatible with 316 stainless steel and above 1000 psi: any non-flammable, non-toxic, non-explosive, non-oxidizing liquid or gas compatible with 316 stainless steel.</li> </ul>				

Mechanical specifications	
Dimensions (HxWxD)	12.7 cm x 11.4 cm x 3.7 cm (5in x 4.5in x 1.5in)
Pressure connection	¼ in NPT Male
Housing/Weight	Cast ZNAL 0.56 kg (1.22 lb) with holster
Display	5 ½ digits, 16.53 mm (0.65 in) high 20-segment bar graph, 0 to 100%
Power	Three AA alkaline batteries
Battery life	1,500 hours without backlight (continuous on), 2,000 hours at slow sample rate

## Ordering information

<b>Fluke-700G01</b>	Pressure Gauge, ±10 inH <sub>2</sub> O WC (0.4 PSIG)
<b>Fluke-700G02</b>	Pressure Gauge, ±30 inH <sub>2</sub> O WC (1 PSIG)
<b>Fluke-700G04</b>	Pressure Gauge, ± 15 PSIG
<b>Fluke-700G05</b>	Pressure Gauge, 30 PSIG
<b>Fluke-700G06</b>	Pressure Gauge, 100 PSIG
<b>Fluke-700G27</b>	Pressure Gauge, 300 PSIG
<b>Fluke-700G07</b>	Pressure Gauge, 500 PSIG
<b>Fluke-700G08</b>	Pressure Gauge, 1000 PSIG
<b>Fluke-700G10</b>	Pressure Gauge, 2000 PSIG
<b>Fluke-700G29</b>	Pressure Gauge, 3000 PSIG
<b>Fluke-700G30</b>	Pressure Gauge, 5000 PSIG
<b>Fluke-700G31</b>	Pressure Gauge, 10000 PSIG
<b>Fluke-700GA4</b>	Pressure Gauge, 15 PSIA
<b>Fluke-700GA5</b>	Pressure Gauge, 30 PSIA
<b>Fluke-700GA6</b>	Pressure Gauge, 100 PSIA
<b>Fluke-700GA27</b>	Pressure Gauge, 300 PSIA
<b>Fluke-700RG05</b>	Pressure Gauge, Reference, 30 PSIG
<b>Fluke-700RG06</b>	Pressure Gauge, Reference, 100 PSIG
<b>Fluke-700RG07</b>	Pressure Gauge, Reference, 500 PSIG
<b>Fluke-700RG08</b>	Pressure Gauge, Reference, 1000 PSIG
<b>Fluke-700RG29</b>	Pressure Gauge, Reference, 3000 PSIG
<b>Fluke-700RG30</b>	Pressure Gauge, Reference, 5000 PSIG
<b>Fluke-700RG31</b>	Pressure Gauge, Reference, 10000 PSIG
<b>700G/TRACK</b>	Data logging software and cable
<b>Fluke-700HTPK</b>	Hydraulic test pump kit, 0 to 10000 PSI/690 BAR
<b>Fluke-700PTPK</b>	Pneumatic test pump kit, 0 to 600 PSI/40 BAR

### Included accessories (Gauges)

Manual on CD-ROM in 14 languages  
 Traceable certificate of calibration  
 1/4" NPT to 1/4" ISO adapter

## Váš dodávateľ:



### MERATEST s.r.o.

Družstevná 2, 916 01 Stará Turá  
 Mobil: +421 903 533 859  
 Tel.: +421 32/642 0909  
 E-mail: molec@meratest.sk  
[www.meratest.sk](http://www.meratest.sk)

**Fluke.** *The Most Trusted Tools  
 in the World.*

### Fluke Europe B.V.

P.O. Box 1186  
 5602 BD Eindhoven  
 The Netherlands  
 Web: [www.fluke.com](http://www.fluke.com)

### For more information call:

In Europe/M-East/Africa +31 (0)40 2 675 200  
 or Fax +31 (0)40 2 675 222

### Fluke (UK) Ltd.

52 Hurricane Way  
 Norwich, Norfolk  
 NR6 6JB  
 United Kingdom  
 Tel.: +44 (0)20 7942 0700  
 Fax: +44 (0)20 7942 0701  
 E-mail: [industrial@uk.fluke.nl](mailto:industrial@uk.fluke.nl)  
 Web: [www.fluke.co.uk](http://www.fluke.co.uk)

©2013 Fluke Corporation. Printed in The Netherlands  
 Data subject to alteration without notice.  
 06/2013 Pub\_ID: 11885-eng

Modification of this document is not permitted  
 without written permission from Fluke Corporation.